



modular engineered roof system



spanish tile by Roof-eco is a highly engineered modular roof system made of recycled material with nanotechnology.

- panels with self-locking design, smart anchor system
- easy to install allowing 70% time savings
- light weight, no reinforcement needed
- strong and unbreakable roof
- aesthetic, elegant finish
- patented technology
- maintenance free
- made in Europe



overview

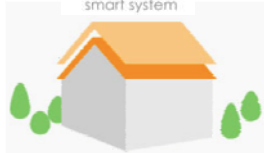
- advantages
- applications
- components
- installation
- contact information
- frequently asked questions



traditional
systems



spanish
tile
smart system



advantages:

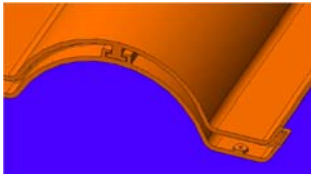
- light weight - there is no heavy structure support required
- fully impermeable - no under roofing is required
- tiles do not absorb moisture or humidity – no mold, no need to pressure wash
- lasting appearance by UV blocking additives – no discoloration



unbreakable



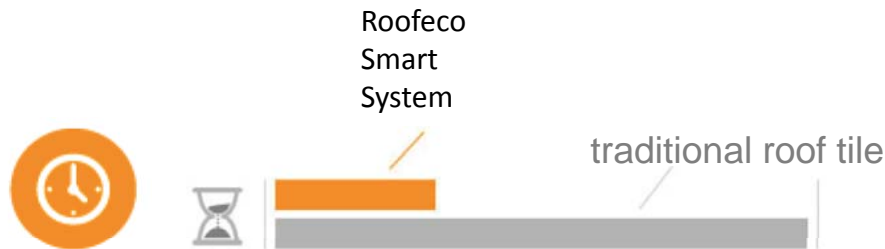
mooring / anchor
cut section



made of
recycled
material

advantages:

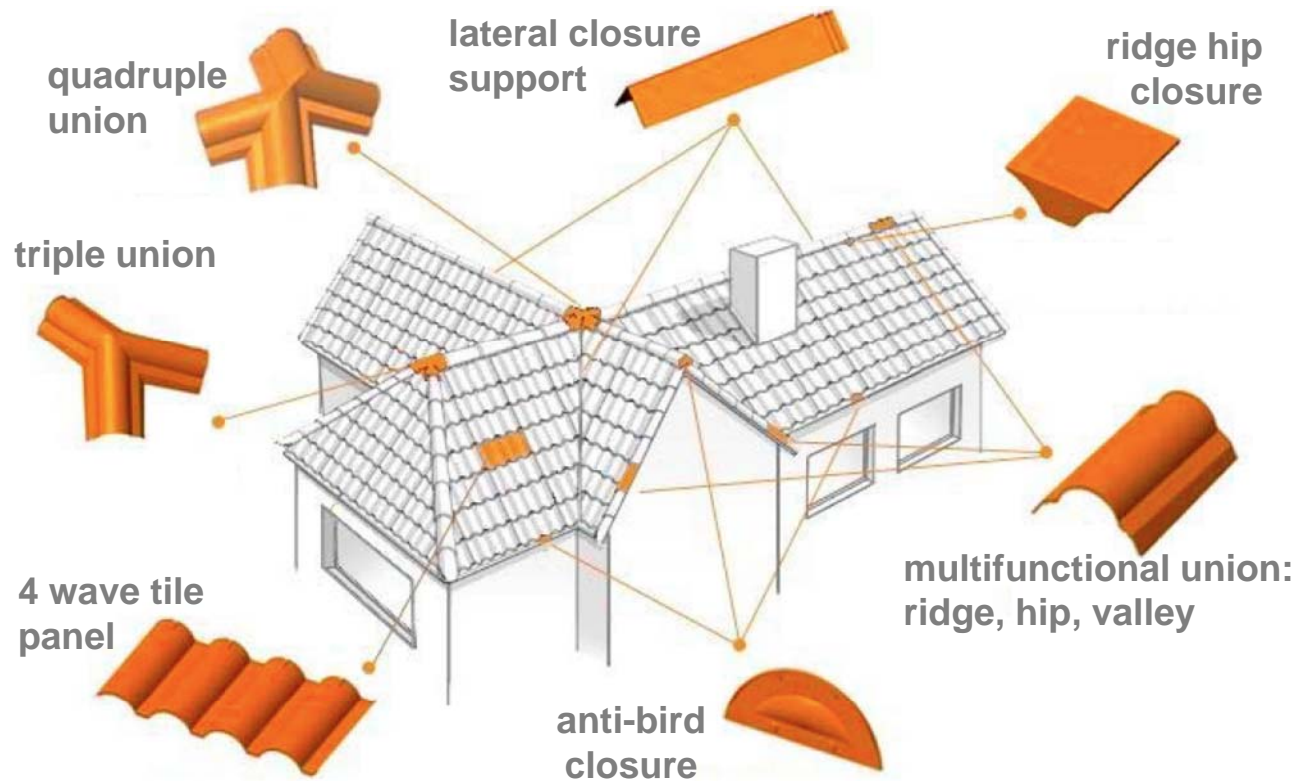
- retains shape - strong, unbreakable, resilient material
- smart anchor system - hurricane resistant
- easy and quick installation – 70% faster to install than traditional tile



- patented technology



components:





elegant
interior



commercial
facility in
Wisconsin

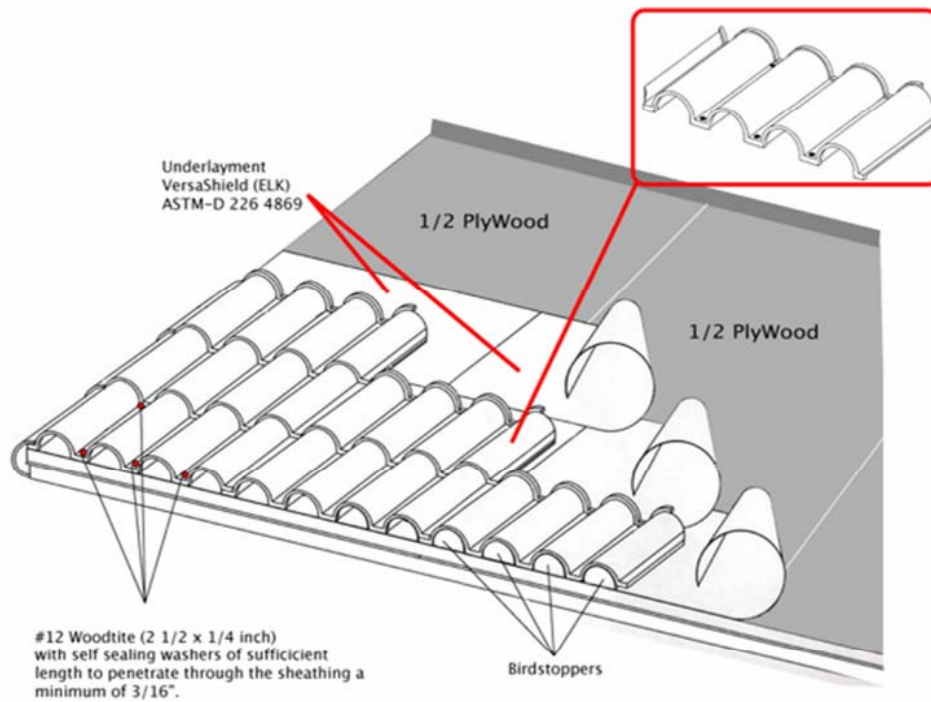


applications:

- homes
- cabins
- BBQ's
- garages
- farms
- commercial facilities
- terraces
- walkways
- park shaded facilities

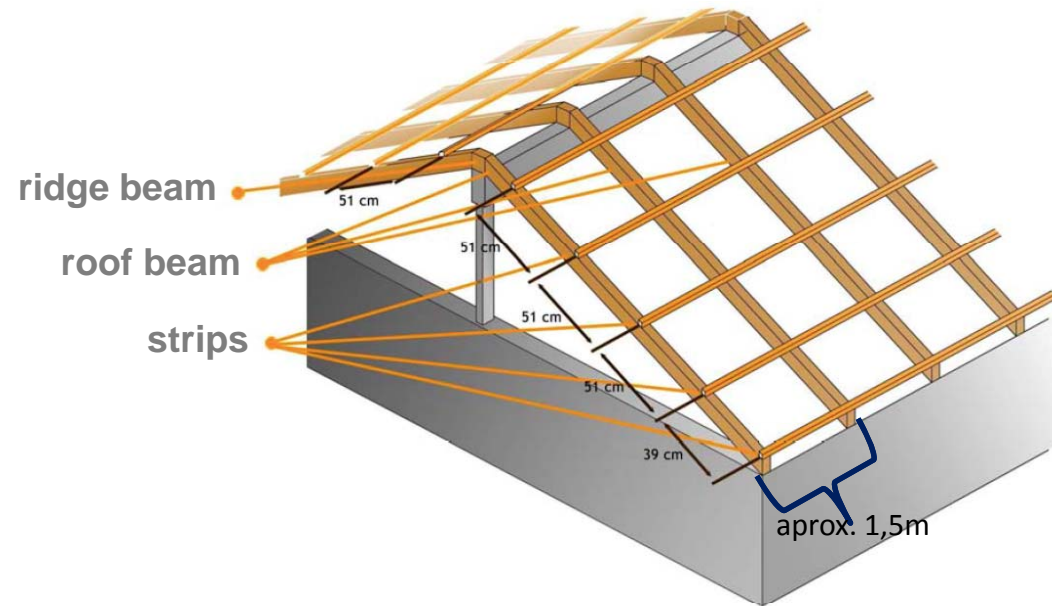


installation - overplywood





installation -overframe





contact information:

www.roofecosystem.com

marianella@roofecosystem.com

tel. (+34)622336017

Spain

frequently asked questions:

- ***Will these tiles break?*** Due to the minerals added to the formula the tiles are very strong. They can be run over by a truck and they will return to their original shape right away.
- ***Do the Tiles absorb moisture?*** No, tiles are non porous. They act like any other plastic item, which will not absorb moisture or humidity.
- ***Do I have to pressure washed my roof?*** No, the tiles will not create or house mold, so there is no need to pressure wash them.
- ***Will the tiles look “plastic” on the roof?*** No, tiles will look just like clay tiles. The shiny tiles will turn to matte color after three to six months of exposure to weather on the roof. A “natural clay look” will be maintain for decades.
- ***Have they been installed in a cold climate?*** Yes, tiles have been installed in various climates. The performance of the tiles in the Northern United States has been tremendous.
- ***Will the tiles decolorize or fade with the sunlight?*** No, tiles are colored with metal oxide pigments that will not fade. The formula also contain UV blocking additives that will protect them from sun damage.
- ***Can we cut the tiles in different angles or to various shapes & sizes?*** Absolutely, tiles can be effortlessly cut using a using a regular manual saw to fit your particular need. The material handles much like wood.
- ***Will hardware for attaching the tiles cause leaks once installed?*** No, The screws used for installation have a weather resistant rubber washer that makes a perfect seal and will not allow water to penetrate the tiles.
- ***If I have asphalt shingles, would I have to reinforce my roof in order to installed the tiles?*** No, the light weight of these tiles allows for easy installation that does not require reinforcement to your existing roof structure whether you currently have shingles or clay.